



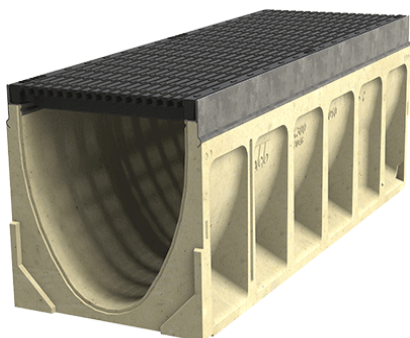
ACO Drain

## KlassikDrain K200

PORTFOLIO

### Ebbett Audi & Volkswagen

Audi and Volkswagen are two heavyweight rivals in the car world. Designers for the Ebbett Audi & Volkswagen sought to create a space which moved away from traditional car yards and drew customers into the showroom where the brands were separated. To achieve this effect, full length windows and sliding doors were required to highlight the cars on show inside. Level entry threshold drainage was made more complicated by the need to be suitable for vehicle loads. To manage this requirement, ACO's KlassikDrain K200 with Ductile Iron grate, certified to AS 3996 Class D loading, was chosen.



### Benefits

- Ductile Iron grates with **Heelsafe**® Anti-Slip, providing a pedestrian friendly trafficable surface water management.
- The KlassikDrain K200 is an acceptable threshold drainage solution under E1. Size requirements for E2 are exceeded but it still meets load requirements.
- The system complements the architectural design.



[www.aconz.co.nz](http://www.aconz.co.nz)

